



WWW.ROFFS.COM



FISHING@ROFFS.COM



321.723.5759



@ROFFSFISHING



**FISHERIES OCEANOGRAPHIC ANALYSIS FOR VEATCH CANYON TO POWELL CANYON OFFSHORE (LAT/LONG)
UPDATED ON THURSDAY 20 AUGUST 2020 FOR THURSDAY P.M. & FRIDAY FISHING ONLY**

Based on a multiple factor analysis, the symbols (hot spot dots) mark the areas where bait concentrations are expected and where fishing action are expected to be better compared with other (non-marked) areas. These are not based on dock rumors or hearsay fishing reports. Fishing reports are stated as such. You should start fishing where you recognize other signs of good fishing conditions near these marked areas. It is very important to use your sea surface temperature (sst°) gauge to locate the boundaries of the water masses, which are outlined. Rather than trying to find water based on the absolute temperature values shown on the map, search for the relative change in sst where the water mass boundaries occur. Arrows indicate the main current direction. Numbers inside of the dots indicate the number of consecutive days that we have seen favorable conditions in that location. 1 fathom = approximately 6 feet. Afternoon SST is likely to be 1.0°F or greater than indicated by the morning calibration on this analysis. **NUMBERS IN PARENTHESIS AFTER LOCATIONS ARE NUMBER OF DAYS THAT SPOT HAS BEEN FAVORABLE.**

We now provide cloud-free SST and ocean color/chlorophyll data from our new partner Fathom Science™ for at 6am forecast for the next day. This data is cutting-edge, high resolution, cloud-free modeled data that has been evaluated and validated by ROFFS™ along with other oceanographic scientists and proven to be the most accurate cloud-free data available to guide you in the right direction to increase your chances for fishing action. The cloud-free data will not be as accurate as the real time satellite imagery, but it will guide you to the general area for the better features, especially when it is cloudy. For more information please visit <https://www.roffs.com/faqs/>

We were able to use this morning's infrared sst° and yesterday afternoon's MODIS/VIIRS/Sentinel chl/ocean color satellite imagery for this analysis area to follow the oceanographic conditions for the past four days. Overall, we continue to observe the northwestern boundaries of the relatively large, clockwise rotating eddy formation centered southeast of this chart area. This eddy has recently pulled a filament of warmer (80/81°F) blue green water into this chart area off of Oceanographer Canyon while blended blue/bluer (79°F) water moves east over the 100-250 fathom depths of Lydonia and Powell Canyons. We continue to observe cooler (67°F-69°F) green/blue green water moving south and southwest towards the Atlantis Canyons and Brick Rock. Warmer (71°F-75°F) blended blue water continues to push northwest, over the 30-40 fathom wrecks and good bottom, though these water masses have become less stable as cooler water has pushed southwest from the Asia Rip/Little Georges Bank over the past 12-24 hours. We have observed warmer (77/78°F) bluer water push west off of Hydrographer Canyon towards Veatch Canyon over the past 12 hours as well. We have also included an ocean color/chlorophyll composite image from yesterday afternoon so you can get a sense of where the bluer and greener water is located (email only, white=clouds).

OFFSHORE:

With this in mind, the best chances for offshore tuna (yellowfin and bigeye), dolphin, wahoo, and billfish (marlin/swordfish) fishing action are likely to occur over the 100-250 fathom depths off of Lydonia and Powell Canyons (from near 67°50'W & 40°17'N (3), 67°40'W & 40°20'N (3), and 67°28'W & 40°23'N (3)) where favorable (76/77°F-79°F) blended blue/bluer water mass boundary conditions have been observed for three days. These conditions suggest good chances for fishing action to occur. Keep in mind, we anticipate warmer (80/81°F) blue green water to begin moving eastwards, towards these boundaries by this evening and into

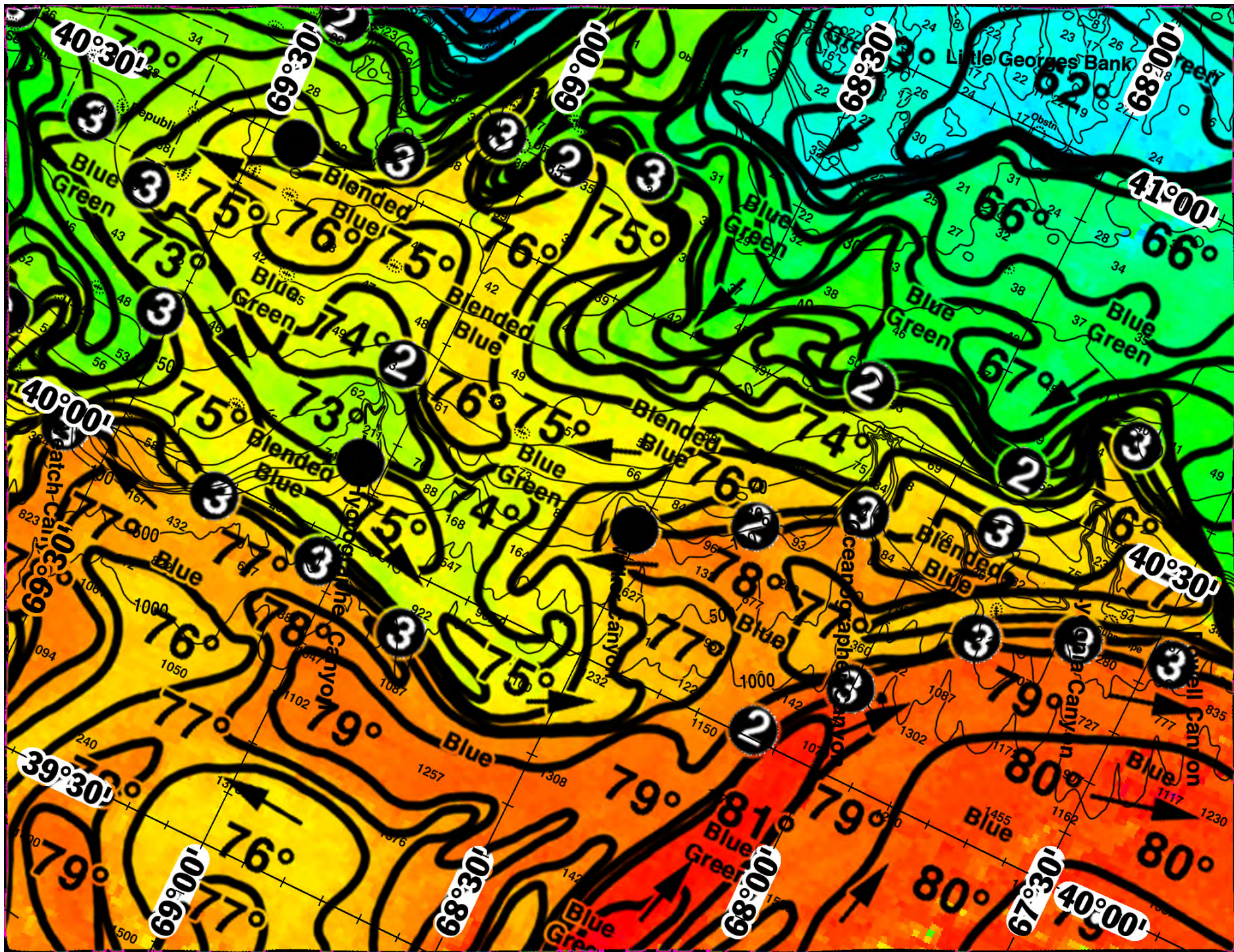
tomorrow. Fishing the warmer (80°F) bluer inner boundaries of this larger eddy formation, over 1000 fathom depths will also likely increase your chances for finding favorable fishing action. Warmer (77/78°F-80/81°F) blue/blue green water mass boundary conditions have been observed offshore of Oceanographer Canyon (near 68°00'W & 40°08'N (3) and 68°08'W & 40°00'N (2)) for the past two to three days suggesting increased chances for fishing action to occur as well.

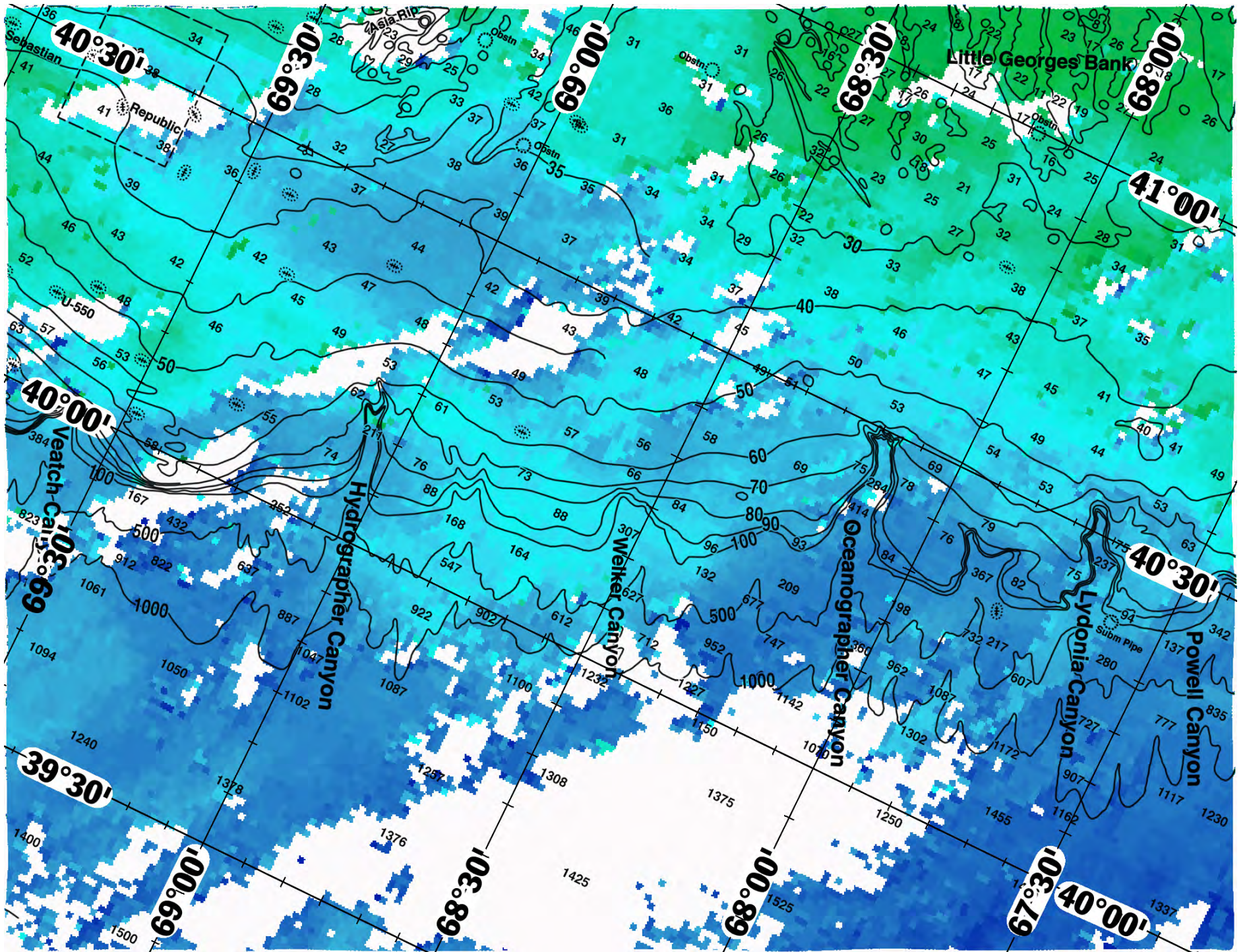
The next best chances for fishing action are likely to occur over the 100-500-1000 fathom depths off of Hydrographer Canyon (from near 69°15'W & 40°00'N (3), 69°02'W & 39°58'N (3), and 68°50'W & 39°55'N (3)) where favorable (74/75°F-77/78°F) blended blue to bluer water mass boundary conditions have been observed pushing west. These conditions suggest additional good chances for offshore tuna, dolphin, wahoo, and billfish fishing action to occur as well. Additional good chances for fishing action are likely to occur further west where some of this warmer (77/78°F) bluer water has pushed into Veatch Canyon (near 69°35'W & 39°58'N (3)) where favorable but different water mass boundary conditions have been observed for three days now.

INSHORE:

The inshore area has become dominated by irregularly shaped water masses, suggesting that the inshore conditions are unstable. This is usually associated with slow fishing action as the fish are not concentrated in any particular area. The better chances for inshore fishing action in the eastern chart area is likely to occur north of Hydrographer Canyon (near 69°04'W & 40°40'N (3) and 69°15'W & 40°34'N (3)) where favorable (70°F-76°F) green/blue green to blended blue water mass boundary conditions have been observed for three days. Another option is to head towards the 35-40 fathom wrecks and good bottom south of the Dorothy & Mary wreck (near 70°03'W & 40°30'N (3) and 69°48'W & 40°24'N (3)) where favorable (67/69°F-72/74°F) green/blue green water mass boundary conditions have been observed for three days as well. Further east, offshore of the Little Georges Bank (from near 68°14'W & 40°32'N (2), 67°54'W & 40°32'N (2), and 67°45'W & 40°40'N (3)) favorable (67/68°F-74/75°F) blue green to blended blue water mass boundary conditions have also been observed for two to three days. These conditions suggest additional increased chances for inshore tuna fishing action to occur as well.

ROFFS™ SUMMER Hours: Mon – Fri. 9:00 am – 7:00 pm EDT (sometimes later based on demand) with analysis order deadline before 3pm. We are now open on Saturdays 9AM to 4PM (sometimes we close earlier based on demand) analysis order deadline is 9:00am on Saturday. Thank you for not sharing this analysis with non-paying anglers. Remember you can order and/or purchase your fishing analyses from our website (<http://www.roffs.com/>) or by email (fishing@roffs.com). Verbal updates are free while on the water between 10:30 AM and 11:59 AM (eastern time). **The ROFFS™ Graphic analysis is on the next page.**

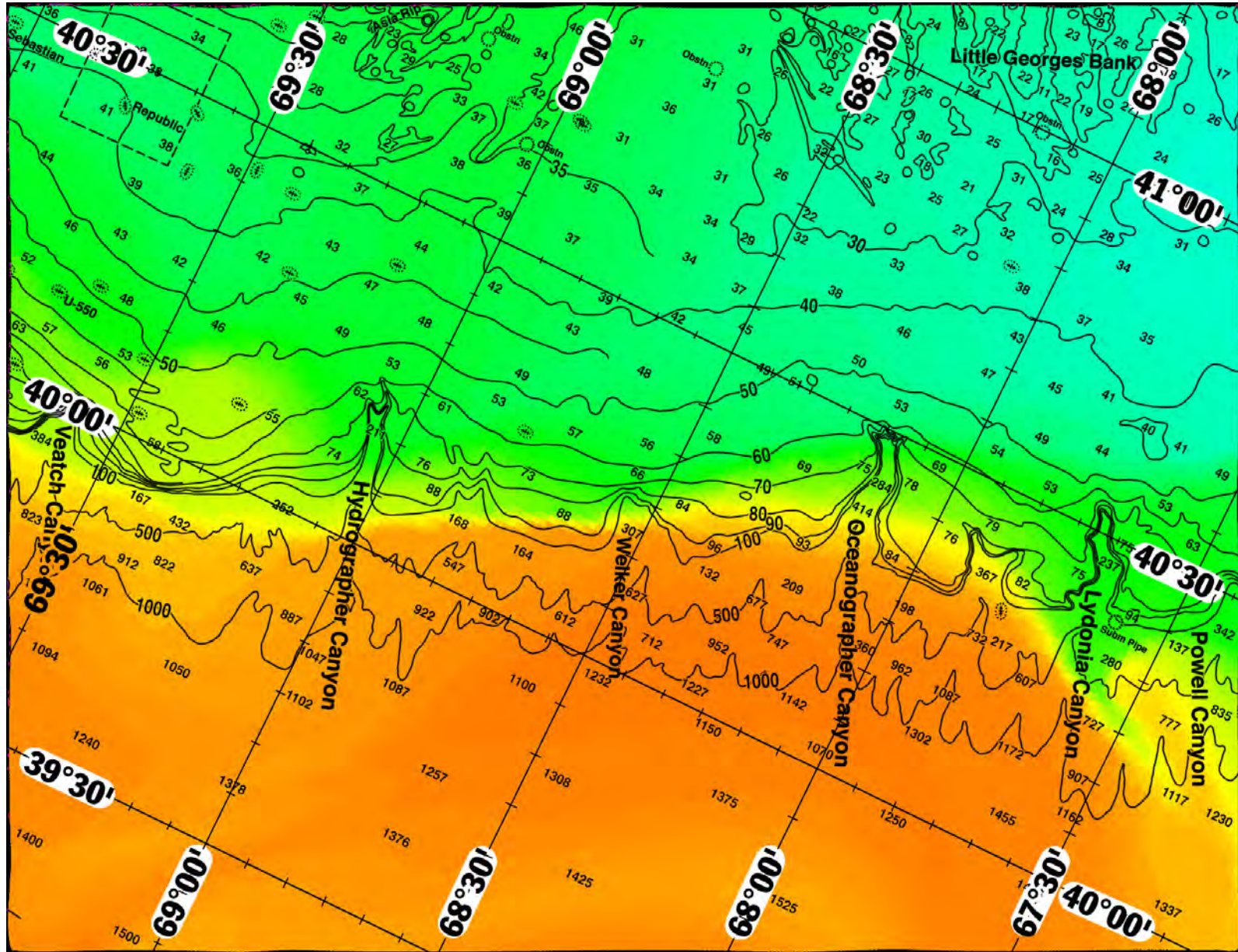






FATHOM SCIENCE

SST FORECAST for TOMORROW MORNING FISHING





FATHOM SCIENCE

OCEAN COLOR/CHLOROPHYLL FORECAST for TOMORROW MORNING

