



WWW.ROFFS.COM



FISHING@ROFFS.COM



321.723.5759



@ROFFSFISHING

FISHERIES OCEANOGRAPHIC ANALYSIS FOR THE HUDSON CANYON – HYDROGRAPHER CANYON OFFSHORE (LAT/LONG) UPDATED ON THURSDAY 20 AUGUST 2020 FOR THURSDAY P.M. & FRIDAY FISHING ONLY

Based on a multiple factor analysis, the symbols (hot spot dots) mark the areas where bait concentrations are expected and where fishing action are expected to be better compared with other (non-marked) areas. These are not based on dock rumors or hearsay fishing reports. Fishing reports are stated as such. You should start fishing where you recognize other signs of good fishing conditions near these marked areas. It is very important to use your sea surface temperature (sst°) gauge to locate the boundaries of the water masses, which are outlined. Rather than trying to find water based on the absolute temperature values shown on the map, search for the relative change in sst where the water mass boundaries occur. Arrows indicate the main current direction. Numbers inside of the dots indicate the number of consecutive days that we have seen favorable conditions in that location. 1 fathom = approximately 6 feet. Afternoon SST is likely to be 1.0°F or greater than indicated by the morning calibration on this analysis. **NUMBERS IN PARENTHESIS AFTER LOCATIONS ARE NUMBER OF DAYS THAT SPOT HAS BEEN FAVORABLE.**

We now provide cloud-free SST and ocean color/chlorophyll data from our new partner Fathom Science™ for at 6am forecast for the next day. This data is cutting-edge, high resolution, cloud-free modeled data that has been evaluated and validated by ROFFS™ along with other oceanographic scientists and proven to be the most accurate cloud-free data available to guide you in the right direction to increase your chances for fishing action. The cloud-free data will not be as accurate as the real time satellite imagery, but it will guide you to the general area for the better features, especially when it is cloudy. For more information please visit <https://www.roffs.com/faqs/>

We were able to use this morning's infrared sst° and yesterday afternoon's MODIS/VIIRS/Sentinel chl/ocean color satellite imagery for this analysis area to follow the oceanographic conditions for the past four days. Overall, we continue to observe warmer (78°F-80°F) bluer water moving northwards off of Hudson Canyon. Some of this warmer (78°F) bluer water has been pulled west/southwest over the Letters and southwest over 75 fathom depths while less stable water mass boundary conditions have been observed east, towards the 500 fathom depths near the Lobster Claw. Inshore, we have observed a relatively small, counter-clockwise center of rotation west of the Outer Butterfish Hole that is pulling warmer (72°F) blue green water in a favorable direction towards the 30-35 fathom depths near the Ranger. We continue to observe cooler (67°F-69°F) green/blue green water moving south and southwest towards the Atlantis Canyons and Brick Rock. Warmer (71°F-75°F) blended blue water continues to push northwest, over the 30-40 fathom wrecks and good bottom, though these water masses have become less stable as cooler water has pushed southwest from the Asia Rip/Little Georges Bank over the past 12-24 hours. We have observed warmer (77/78°F) bluer water push west off of Hydrographer Canyon towards Veatch Canyon over the past 12 hours as well. We have also included an ocean color/chlorophyll composite image from yesterday afternoon so you can get a sense of where the bluer and greener water is located (email only, white=clouds).

OFFSHORE:

With this in mind, the better chances for offshore tuna, dolphin, wahoo, and billfish (marlin and swordfish) fishing action are likely to occur along the southwest wall of Hudson Canyon near the Letters (near 72°20'W & 39°30'N (4)) as well as the 100 Square and 100 Fathom ledge (near 72°14'W & 39°34'N (4) and 72°04'W & 39°35'N (4)) where favorable (75°F-78°F) blue green to bluer water mass boundary conditions have been observed for four days. Over the 500 fathom depth and good bottom near the Lobster Claw (near 71°42'W & 39°40'N (4)) slightly less stable (75°F-76°F-77°F) blue green/blended blue to bluer water mass boundary conditions have been observed for four days as well. These conditions suggest good chances for fishing action to occur. You may also try fishing east of the Fish Tails and offshore (near 71°15'W & 40°03'N (4) and 71°04'W & 39°58'N (4)) where favorable (73°F-76°F) blue green/blended blue water mass boundary conditions have also been observed for four days.

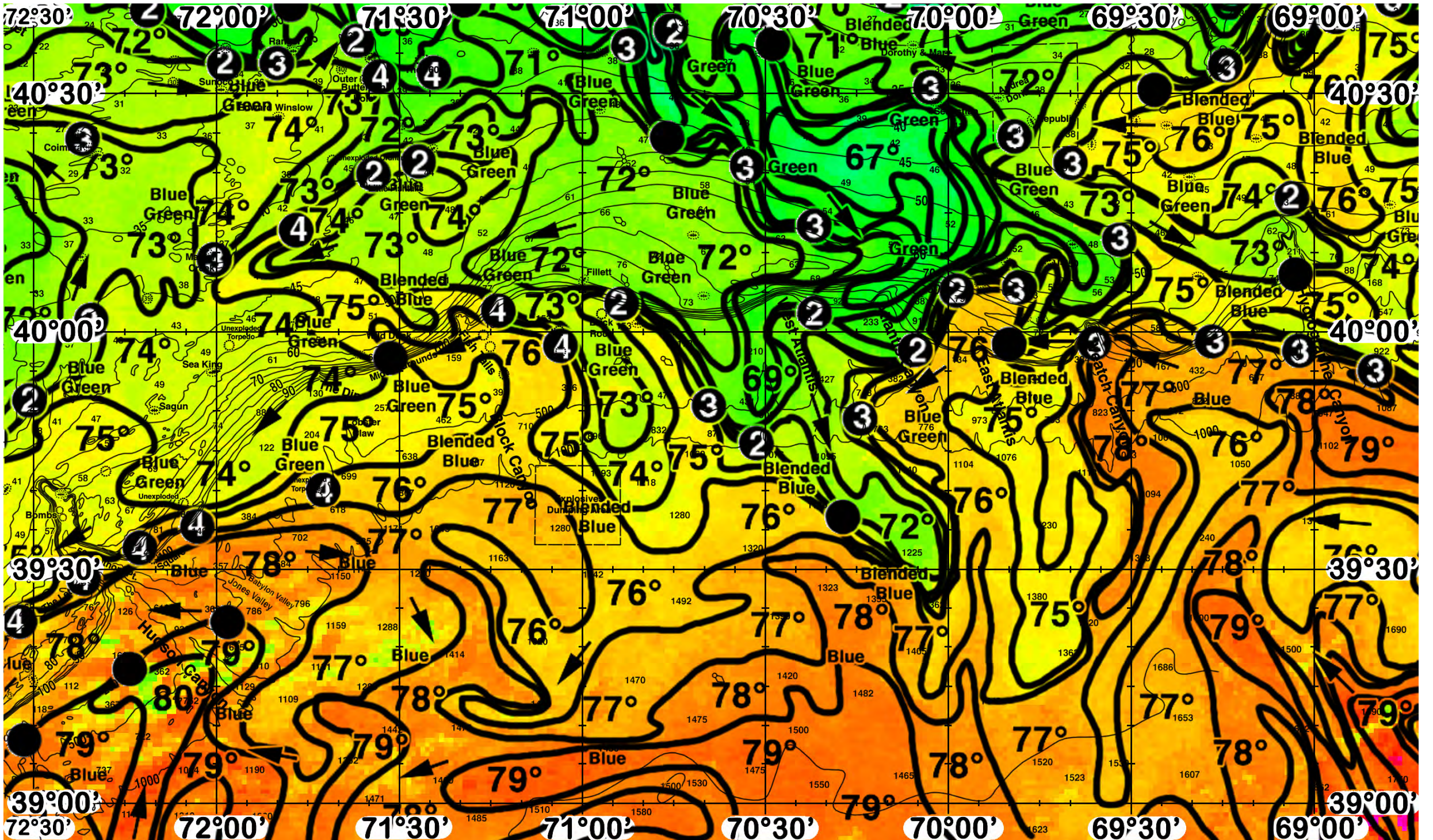
The next best chances for fishing action are likely to occur over the 100-500-1000 fathom depths off of Hydrographer Canyon (from near 69°15'W & 40°00'N (3), 69°02'W & 39°58'N (3), and 68°50'W & 39°55'N (3)) where favorable (74/75°F-77/78°F) blended blue to bluer water mass boundary conditions have been observed pushing west. These conditions suggest additional good chances for offshore tuna, dolphin, wahoo, and billfish fishing action to occur as well. Additional good chances for fishing action are likely to occur further west where some of this warmer (77/78°F) bluer water has pushed into Veatch Canyon (near 69°35'W & 39°58'N (3)) where favorable but different water mass boundary conditions have been observed for three days now.

INSHORE:

South of Montauk, the better chances for inshore tuna (bluefin/yellowfin) fishing action are likely to occur near the Ranger wreck (near 71°40'W & 40°35'N (3)) to the Outer Butterfish Hole (near 71°34'W & 40°32'N (4)) and '600' (near 71°25'W & 40°32'N (4)) where favorable (69/70°F-73/74°F) green/blue green water mass boundary conditions have been observed moving north/northeast along the eastern side of a relatively small, counter-clockwise center of rotation. These conditions suggest good chances for fishing action to occur. You may also try fishing west, towards the Sunoco wreck and 25-30 fathom good bottom (near 72°00'W & 40°05'N (2) to 72°10'W & 40°40'N (2)) where favorable (69/70°F-72/73°F) green/blue green water mass boundary conditions have been observed for two days, suggesting increased chances for fishing action to occur as well. Further south, we have observed favorable (72°F-74°F) green/blue green water mass boundary conditions near the Little Fish Tails (near 71°34'W & 40°20'N (2) and 71°28'W & 40°22'N (2)) for the past two days suggesting additional increased chances for fishing action to occur. You may also try heading towards the Maiden Creek (from near 71°46'W & 40°13'N (4) to 72°00'W & 40°10'N (3)) where similar water mass boundary conditions have been observed for three to four days. These conditions suggest additional good chances for fishing action to occur as well.

The inshore area further east has become dominated by irregularly shaped water masses, suggesting that the inshore conditions are unstable. This is usually associated with slow fishing action as the fish are not concentrated in any particular area. The better chances for inshore fishing action in the eastern chart area is likely to occur north of Hydrographer Canyon (near 69°04'W & 40°40'N (3) and 69°15'W & 40°34'N (3)) where favorable (70°F-76°F) green/blue green to blended blue water mass boundary conditions have been observed for three days. Another option is to head towards the 35-40 fathom wrecks and good bottom south of the Dorothy & Mary wreck (near 70°03'W & 40°30'N (3) and 69°48'W & 40°24'N (3)) where favorable (67/69°F-72/74°F) green/blue green water mass boundary conditions have been observed for three days as well.

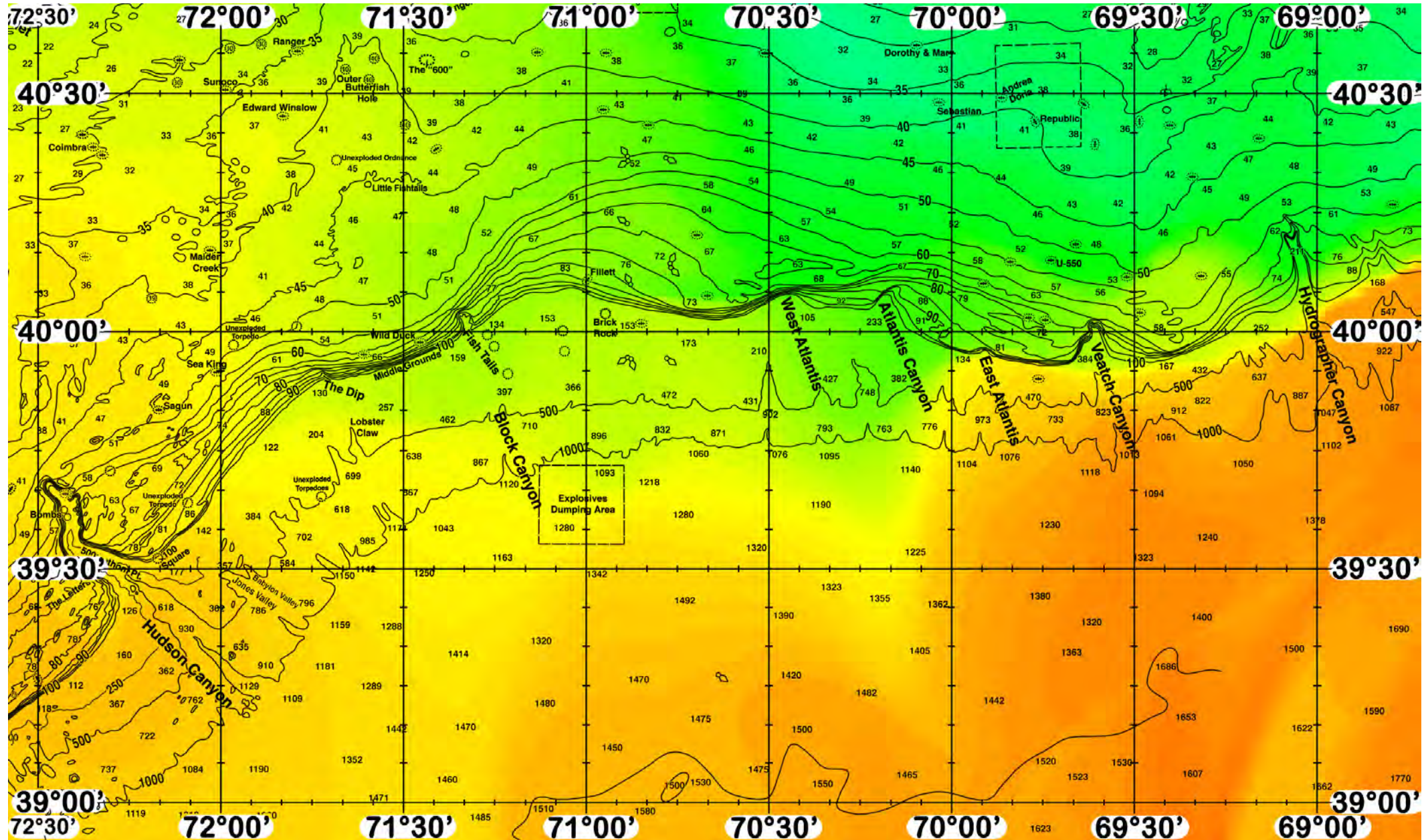
ROFFS™ SUMMER Hours: Mon – Fri. 9:00 am – 7:00 pm EDT (sometimes later based on demand) with analysis order deadline before 3pm. We are now open on Saturdays 9AM to 4PM (sometimes we close earlier based on demand) analysis order deadline is 10:00am on Saturday. *Thank you for not sharing this analysis with non-paying anglers.* Remember you can order and/or purchase your fishing analyses from our website (<http://www.roffs.com/>) or by email (fishing@roffs.com). Verbal updates are free while on the water between 10:30 AM and 11:59 AM (eastern time). **The ROFFS™ Graphic analysis is on the next page.**





FATHOM SCIENCE

SST FORECAST for TOMORROW MORNING FISHING





FATHOM SCIENCE

OCEAN COLOR/CHLOROPHYLL FORECAST for TOMORROW MORNING

